

2MP Explosion Proof Anti-Corrosion WDR Fixed IR Camera

KDM-EX-FL204IR01 (Tiandy)



KEY FEATURES

- Default:Stainless Steel 316L Material
- Up to 1920x1080@30fps
- S+265/H.265/H.264
- Min. illumination Color: 0.02Lux@F2.0
- Smart IR, IR Range: 40m
- Support tripwire and perimeter
- Operating Conditions -40°C~60°C, 0~95% RH
- POE, IP68
- Ex Mark : Ex d IIC T6 Gb /Ex tD A21 IP68 T80°C

Application Environments:

This is a miniaturized, infrared integrated, and intelligent Ex-Proof Anti-corrosion monitoring equipment. It can be widely used in petroleum, chemical industry, oil depots, ships,Vessels ,Marine, drilling platforms, gas stations, gas stations, ports, mines, aerospace, Military industry, steel, pharmaceutical, fireworks production, food processing and other places.

It has a built-in infrared lighting chip, which automatically turns on the infrared light at night or when the visible light is insufficient. It adopts a window design with the camera to completely eliminate the infrared light halo and can monitor dangerous places all-weather.The window is special tempered flat glass, the light transmittance is higher than 95%, while being sturdy and durable, it ensures the clear image.Optional low-temperature automatic heating function, automatic heating components can ensure that the equipment can work stably for a long time under the temperature condition of -30°C to +60°C to prevent condensation.The protection grade reaches IP68, the stainless steel Sunshield is adopted, the structure is firm and fully sealed, which represents the current high standard of environmental protection.Also widely used for marine safe environment.

SPECIFICATIONS

Camera	
Image Sensor	1/2.8" CMOS
Signal System	PAL/NTSC
Min. Illumination	Color: 0.02Lux@ (F2.0, AGC ON), B/W: 0Lux with IR
Shutter Time	1s to 1/100,000s
Day & Night	Dual IR Cut Filter with Auto Switch
Wide Dynamic Range	Digital WDR
Angle Adjustment	Flexible
Lens	
Lens Type	Fixed
Focus	2.8mm/4mm
Lens Mount	M12
Aperture	F2.0, Fixed
FOV	Horizontal field of view: 99.7° (2.8mm)/83.3°(4mm)
Illuminator	
IR LEDs	2
IR Range	Up to 40 m
Wavelength	850nm
White LEDs/Warmlights	N/A
Compression Standard	
Video Compression	S+265/H.265/H.264
Video Bit Rate	32 Kbps~6 Mbps
Audio Compression	N/A
Audio Bit Rate	N/A
Image	
Max. Resolution	1920x1080
Main Stream	PAL: 25fps (1920x1080, 1280x720, 704x576, 640x480) NTSC: 30fps (1920x1080,1280x720, 704x480, 640x480)
Sub Stream	PAL: 25fps (704x576, 704x288, 640x360, 352x288) NTSC: 30fps (704x480, 704x240, 640x360, 352x240)
Third Stream	N/A
Image Setting	Saturation, brightness, contrast, sharpness, adjustable by client software or web browser
Image Enhancement	BLC/3D DNR/HLC
ROI	N/A
OSD	16x16, 32x32, 48x48, adaptable size, Letters Such as Week, Date, Time, Total 3 Regions
Picture Overlay	N/A
Privacy Mask	Yes, 4 regions
Smart Defog	Yes
Feature	
Alarm Trigger	Motion Detection, Mask Alarm, IP Address Conflict
Video Analytics	Tripwire, Perimeter
Early Warning(EW)	N/A

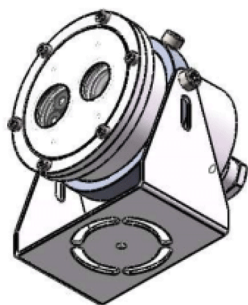
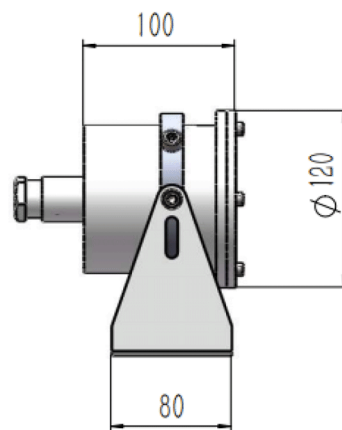
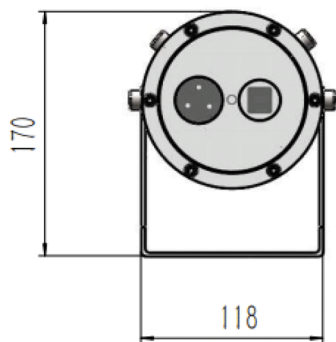
Network	
ANR	Yes(Only Support Tiandy ANR NVR)
Protocols	TCP/IP, HTTP, FTP, DHCP, DNS, DDNS, IPV4, NTP, UDP, Telnet, ICMP, RTP, RTSP, UPnP
System Compatibility	ONVIF (PROFILE S/T/G), SDK, P2P(Mutually exclusive with Profile G)
Remote Connection	≤7
Client	Easy7, EasyLive
Web Version	Web5
Interface	
Communication Interface	1 RJ45 10M/ 100M self adaptive Ethernet port
Audio I/O	N/A
Alarm I/O	N/A
Reset Button	Yes
On-board storage	N/A
General	
Firmware Version	-
Web Client Language	15 languages English, Russian, Spanish, Korean, Italian, Turkish, Simple Chinese, Traditional Chinese, Thai, French, Polish, Dutch, Hebraism, Arabic, Vietnamese
Operating Conditions	-40°C ~ 65°C, 0 ~ 95% RH
Power Supply	DC 12V±25%, PoE (802.3af)
Power Consumption	MAX: 6W(12V) MAX: 7W(POE)
Protection	IP68, Lightning protection, surge protection and voltage transient protection meets EN 55035:2017
Heater	N/A
Dimensions	100*118*170mm
Weight	2.5-3KG

* Listed resolutions are only selectable options. It does not mean that all streams can work at their maximum resolution at the same time.

AVAILABLE MODEL

KDM-EX-FL204IR01(T)
KDM-EX-FL228IR01(T)

DIMENSIONS



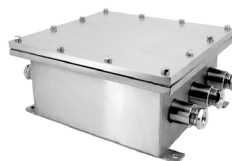
Accessories



Bracket



Ex-Proof Hose



Explosion Proof Anti-Corrosion Junction box

Office

7 Temasek Boulevard Level 32,
Suntec Tower One Singapore 038987
[+65-6678-6557](tel:+65-6678-6557)
sales@revlightsecurity.com

Showroom

47 Kallang Pudding Road,
#09-04, Singapore 349318